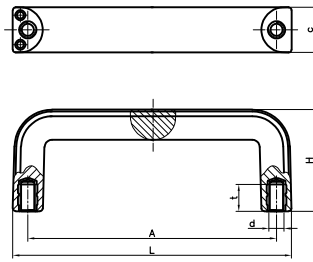


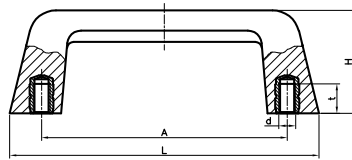
1153 SOLID HANDLE WITH THREADED INSERTS



Code	L	A	d	H	c	t	Color
115312301	124	109 ± 1	M6	45	21	10	Black
115314301	148	132 ± 1	M8	54	24	14	Black

Brass female threaded inserts.
PF: Black Duroplast FS 31 DIN 7708.

1161 ED HANDLE WITH THREADED INSERTS



Code	L	A	d	H	t	Color
116113301	130	109 ± 1	M6	43	10	Black
116116301	165	131 ± 1	M8	55	14	Black

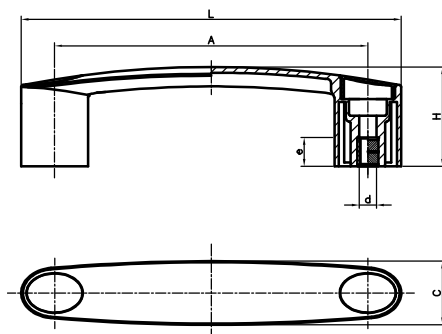
Brass female threaded inserts.
PF: Black Duroplast FS 31 DIN 7708.

1155 CT THERMOPLASTIC D HANDLE WITH THREADED INSERT



■	RAL 7021
■	RAL 2004
■	RAL 3001
■	RAL 5005
■	RAL 1021
■	RAL 7038

Drilled-out brass inserts.
PA: Black reinforced polyamide.
Caps on the following colours: Black, Orange, Red, Blue, Yellow and Grey similar to the RAL indicated above.



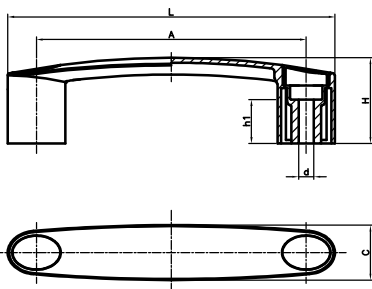
Code	L	A	d	H	C	e	Color	Cap
115509410	116	93±1	M6	34	20	11.5	Black	Black
115510410	146	109±1	M6	41	25	11.5	Black	Black
115511410	146	117±1	M6	41	25	11.5	Black	Black
115513410	163	132±1	M6	45	29	11.5	Black	Black
115509440	116	93±1	M6	34	20	11.5	Black	Orange
115510440	146	109±1	M6	41	25	11.5	Black	Orange
115511440	146	117±1	M6	41	25	11.5	Black	Orange
115513440	163	132±1	M6	45	29	11.5	Black	Orange
115509450	116	93±1	M6	34	20	11.5	Black	Red
115510450	146	109±1	M6	41	25	11.5	Black	Red
115511450	146	117±1	M6	41	25	11.5	Black	Red
115513450	163	132±1	M6	45	29	11.5	Black	Red
115509420	116	93±1	M6	34	20	11.5	Black	Blue
115510420	146	109±1	M6	41	25	11.5	Black	Blue
115511420	146	117±1	M6	41	25	11.5	Black	Blue
115513420	163	132±1	M6	45	29	11.5	Black	Blue
115509430	116	93±1	M6	34	20	11.5	Black	Yellow
115510430	146	109±1	M6	41	25	11.5	Black	Yellow
115511430	146	117±1	M6	41	25	11.5	Black	Yellow
115513430	163	132±1	M6	45	29	11.5	Black	Yellow
115509490	116	93±1	M6	34	20	11.5	Black	Grey
115510490	146	109±1	M6	41	25	11.5	Black	Grey
115511490	146	117±1	M6	41	25	11.5	Black	Grey
115513490	163	132±1	M6	45	29	11.5	Black	Grey

1155 CT THERMOPLASTIC HANDLE WITH THROUGH HOLES



- RAL 7021
- RAL 2004
- RAL 3001
- RAL 5005
- RAL 1021
- RAL 7038

Through holes handle.
 PA: Black reinforced polyamide.
 Caps on the following colours: Black, Orange, Red, Blue, Yellow and Grey similar to the RAL indicated above.



Code	L	A	d	H	C	h1	Color	Cap
115509210	116	93 ± 1	6,5	34	20	20	Black	Black
115510210	146	109 ± 1	8,5	41	25	20	Black	Black
115511210	146	117 ± 1	8,5	41	25	20	Black	Black
115513210	163	132 ± 1	8,5	45	29	22	Black	Black
115515210	181	150 ± 1	8,5	48	31	25	Black	Black
115509240	116	93 ± 1	6,5	34	20	20	Black	Orange
115510240	146	109 ± 1	8,5	41	25	20	Black	Orange
115511240	146	117 ± 1	8,5	41	25	20	Black	Orange
115513240	163	132 ± 1	8,5	45	29	22	Black	Orange
115515240	181	150 ± 1	8,5	48	31	25	Black	Orange
115509250	116	93 ± 1	6,5	34	20	20	Black	Red
115510250	146	109 ± 1	8,5	41	25	20	Black	Red
115511250	146	117 ± 1	8,5	41	25	20	Black	Red
115513250	163	132 ± 1	8,5	45	29	22	Black	Red
115515250	181	150 ± 1	8,5	48	31	25	Black	Red
115509220	116	93 ± 1	6,5	34	20	20	Black	Blue
115510220	146	109 ± 1	8,5	41	25	20	Black	Blue
115511220	146	117 ± 1	8,5	41	25	20	Black	Blue
115513220	163	132 ± 1	8,5	45	29	22	Black	Blue
115515220	181	150 ± 1	8,5	48	31	25	Black	Blue
115509230	116	93 ± 1	6,5	34	20	20	Black	Yellow
115510230	146	109 ± 1	8,5	41	25	20	Black	Yellow
115511230	146	117 ± 1	8,5	41	25	20	Black	Yellow
115513230	163	132 ± 1	8,5	45	29	22	Black	Yellow
115515230	181	150 ± 1	8,5	48	31	25	Black	Yellow
115509290	116	93 ± 1	6,5	34	20	20	Black	Grey
115510290	146	109 ± 1	8,5	41	25	20	Black	Grey
115511290	146	117 ± 1	8,5	41	25	20	Black	Grey
115513290	163	132 ± 1	8,5	45	29	22	Black	Grey
115515290	181	150 ± 1	8,5	48	31	25	Black	Grey

1156 MGM TUBULAR BRIDGE HANDLE WITH THROUGH HOLES



RAL 9005
 RAL 2004

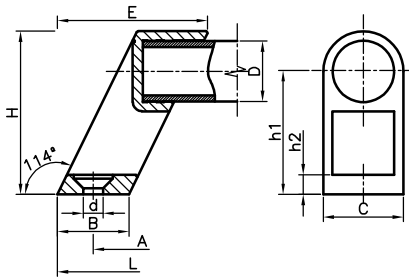
Through hole handle's supports.
 PA: Black or orange reinforced polyamide.
 Tube in anodised aluminium.



ORANGE
 Code 1156 00 410 for tube Ø 20mm (1 unit)
 Code 1156 00 400 for tube Ø 25mm (1 unit)

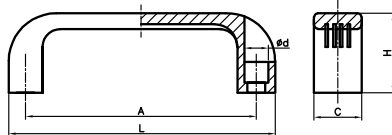


BLACK
 Code 1156 00 010 for tube Ø 20mm (1 unit)
 Code 1156 00 000 for tube Ø 25mm (1 unit)



Code	L	A	d	H	B	C	D	E	h1	h2	Color
115620201	223	200 ± 1	6,4	53	23	26	20	47	40	6	Black
115625201	273	250 ± 1	6,4	53	23	26	20	47	40	6	Black
115630201	323	300 ± 1	6,4	53	23	26	20	47	40	6	Black
115635201	373	350 ± 1	6,4	53	23	26	20	47	40	6	Black
115640201	423	400 ± 1	6,4	53	23	26	20	47	40	6	Black
115650201	523	500 ± 1	6,4	53	23	26	20	47	40	6	Black
115660201	617	600 ± 1	6,4	53	23	26	20	47	40	6	Black
115670201	723	700 ± 1	6,4	53	23	26	20	47	40	6	Black
115620101	229	200 ± 1	8,4	60	29	32	25	56	43	8	Black
115625101	279	250 ± 1	8,4	60	29	32	25	56	43	8	Black
115630101	329	300 ± 1	8,4	60	29	32	25	56	43	8	Black
115635101	379	350 ± 1	8,4	60	29	32	25	56	43	8	Black
115640101	429	400 ± 1	8,4	60	29	32	25	56	43	8	Black
115650101	529	500 ± 1	8,4	60	29	32	25	56	43	8	Black
115660101	629	600 ± 1	8,4	60	29	32	25	56	43	8	Black
115670101	729	700 ± 1	8,4	60	29	32	25	56	43	8	Black
115620241	223	200 ± 1	6,4	53	23	26	20	47	40	6	Orange
115625241	273	250 ± 1	6,4	53	23	26	20	47	40	6	Orange
115630241	323	300 ± 1	6,4	53	23	26	20	47	40	6	Orange
115635241	373	350 ± 1	6,4	53	23	26	20	47	40	6	Orange
115640241	423	400 ± 1	6,4	53	23	26	20	47	40	6	Orange
115650241	523	500 ± 1	6,4	53	23	26	20	47	40	6	Orange
115660241	617	600 ± 1	6,4	53	23	26	20	47	40	6	Orange
115670241	723	700 ± 1	6,4	53	23	26	20	47	40	6	Orange
115620141	229	200 ± 1	8,4	60	29	32	25	56	43	8	Orange
115625141	279	250 ± 1	8,4	60	29	32	25	56	43	8	Orange
115630141	329	300 ± 1	8,4	60	29	32	25	56	43	8	Orange
115635141	379	350 ± 1	8,4	60	29	32	25	56	43	8	Orange
115640141	429	400 ± 1	8,4	60	29	32	25	56	43	8	Orange
115650141	529	500 ± 1	8,4	60	29	32	25	56	43	8	Orange
115660141	629	600 ± 1	8,4	60	29	32	25	56	43	8	Orange
115670141	729	700 ± 1	8,4	60	29	32	25	56	43	8	Orange
115600410		-	6,4	53	23	26	20	47	40	6	Orange
115600400		-	8,4	60	29	32	25	56	43	8	Orange
115600010		-	6,4	53	23	26	20	47	40	6	Black
115600000		-	8,4	60	29	32	25	56	43	8	Black

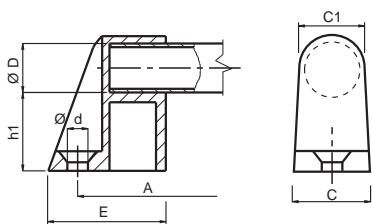
1157 HANDLE WITH THROUGH HOLES



Code	L	A	d	H	C	Color
115711200	110	94 ± 1	6,5	37	21	Black
115713200	133	116 ± 1	9	40	24	Black
115713201	139	120 ± 1	8,5	40	24	Black
115714200	151	132 ± 1	8,5	43	26	Black
115718200	200	180 ± 1	8,5	50	28	Black
115723200	260	235 ± 1	10,5	54	32	Black

Through holes handle.
 PA: Black reinforced polyamide.

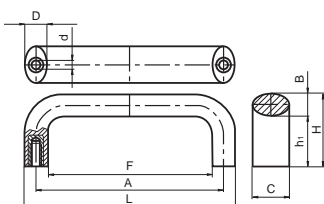
1160 ALUPLAST THERMOPLASTIC HANDLE WITH THROUGH HOLES



Code	A	d	h1	C	C1	D	E	Color
116020101	200±1	8.4	32	28	26	20	43	Black
116030101	300±1	8.4	32	28	26	20	43	Black
116040101	400±1	8.4	32	28	26	20	43	Black
116050101	500±1	8.4	32	28	26	20	43	Black
116070101	700±1	8.4	32	28	26	20	43	Black

Through hole handle's supports.
PA: Black reinforced polyamide.
Tube in anodised aluminium.

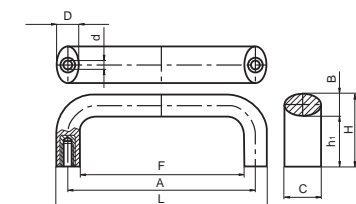
4705 TMP HANDLE WITH THREADED INSERTS



Code	L	A	d	B	H	h1	C	D	F	Color
470509301	98.5	86±1	M6	12.5	40	28	20	12.5	73.5	Black
470510301	106.5	94±1	M6	12.5	40.5	28	20	12.5	81.5	Black
470513301	134	117±1	M6	16	50	34	25	16	102	Black
470514301	148	132±1	M8	16	50	34	25	16	116	Black
470516301	168	150±1	M8	18	58	40	29	18	132	Black
470519301	197	179±1	M8	18	58	40	29	18	161	Black

PA: Reinforced polyamide.
Brass inserts.

4705 TMP HANDLE WITH THREADED SS INSERTS



INOX
Stainless
Steel

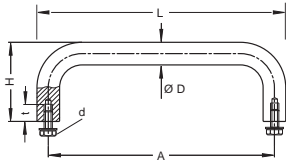
Code	L	A	d	B	H	h1	C	D	F	Color
470509351	98.5	86±1	M6	12.5	40	28	20	12.5	73.5	Black
470510351	106.5	94±1	M6	12.5	40.5	28	20	12.5	81.5	Black
470513351	134	117±1	M6	16	50	34	25	16	102	Black
470514351	148	132±1	M8	16	50	34	25	16	116	Black
470516351	168	150±1	M8	18	58	40	29	18	132	Black
470519351	197	179±1	M8	18	58	40	29	18	161	Black

PA: Reinforced polyamide.
Stainless-steel inserts.

3125 HANDLE VA WITH THREADED HOLES



INOX
Stainless Steel



SS: Stainless steel (1.4305).

The handle is supply with stainless steel screws DIN 933 and washers DIN 125.

Optional cover plates, can be ordered as an accessory:

for \varnothing 8 mm: 31250008 (pack of 20 units).

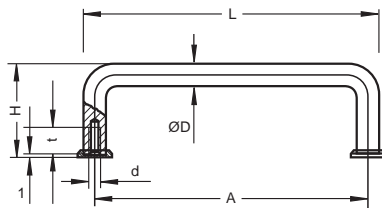
for \varnothing 10 mm: 31250010 (pack of 20 units).

for \varnothing 15 mm: 31250015 (pack of 2 units).

for \varnothing 20 mm: 31250020 (pack of 2 units).

Code	L	A	d	D	H	t	Color
312508060	72	64	M5	8	35	10	Natural
312508081	96	88	M5	8	35	10	Natural
312508101	108	100	M5	8	35	10	Natural
312508120	128	120	M5	8	35	10	Natural
312510100	110	100	M5	10	40	10	Natural
312510120	130	120	M5	10	40	10	Natural
312510180	190	180	M5	10	40	10	Natural
312510250	260	250	M5	10	40	10	Natural
312510300	310	300	M5	10	40	10	Natural
312510350	360	350	M5	10	40	10	Natural
312515150	165	150	M6	15	55	12	Natural
312515200	215	200	M6	15	55	12	Natural
312515250	265	250	M6	15	55	12	Natural
312515300	315	300	M6	15	55	12	Natural
312515350	365	350	M6	15	55	12	Natural
312520200	220	200	M8	20	70	16	Natural
312520250	270	250	M8	20	70	16	Natural
312520300	320	300	M8	20	70	16	Natural
312520350	370	350	M8	20	70	16	Natural

3137 HANDLE RA WITH THREADED HOLES



AL: Anodized aluminium.

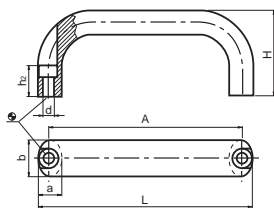
Optional cover plates, can be order as an accessory:

313700001 natural color (pack of 20 units).

313700004 black color (pack of 20 units).

Code	L	A	d	D	t	H	Color
313700501	65	55	M5	10	10	41	Natural
313700801	98	88	M5	10	10	41	Natural
313701001	110	100	M5	10	10	41	Natural
313701201	130	120	M5	10	10	41	Natural
313701801	190	180	M5	10	10	41	Natural
313702001	210	200	M5	10	10	41	Natural
313702301	245	235	M5	10	10	41	Natural
313702501	260	250	M5	10	10	41	Natural
313700504	65	55	M5	10	10	41	Black
313700804	98	88	M5	10	10	41	Black
313701004	110	100	M5	10	10	41	Black
313701204	130	120	M5	10	10	41	Black
313701804	190	180	M5	10	10	41	Black
313702004	210	200	M5	10	10	41	Black
313702304	245	235	M5	10	10	41	Black
313702504	260	250	M5	10	10	41	Black

3733 OV HANDLE FRONT MOUNTING WITH THROUGH HOLES



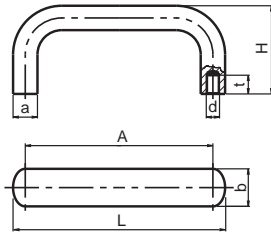
AL: Aluminium.

References in black color are plastic coated.

Code	L	A	d	b	H	a	h2	Color
373300141	130	116	6.4	26	53	17	17	Natural
373300151	146	132	6.4	26	55	17	17	Natural
373300161	178	164	6.4	26	57	17	17	Natural
373300171	210	196	6.4	26	57	17	17	Natural
373300341	130	116	6.4	26	53	17	17	Black
373300351	146	132	6.4	26	55	17	17	Black
373300361	178	164	6.4	26	57	17	17	Black
373300371	210	196	6.4	26	57	17	17	Black



INOX
Stainless
Steel



AL: Aluminium.
SS: Stainless steel.
References in black color are
plastic coated.

Code	L	A	d	b	H	a	t	Material	Color
373300100	113	100	M6	20	47	13	10	AL	Natural
373300110	125	112	M6	20	49	13	10	AL	Natural
373300120	141	128	M6	20	51	13	10	AL	Natural
373300130	173	160	M6	20	51	13	10	AL	Natural
373300140	129	112	M8	26	53	17	12	AL	Natural
373300150	145	128	M8	26	55	17	12	AL	Natural
373300160	177	160	M8	26	57	17	12	AL	Natural
373300170	209	192	M8	26	57	17	12	AL	Natural
373300180	317	300	M8	26	57	17	12	AL	Natural
373300190	417	400	M8	26	57	17	12	AL	Natural
373300300	113	100	M6	20	47	13	10	AL	Black
373300310	125	112	M6	20	49	13	10	AL	Black
373300320	141	128	M6	20	51	13	10	AL	Black
373300330	173	160	M6	20	51	13	10	AL	Black
373300340	129	112	M8	26	53	17	12	AL	Black
373300350	145	128	M8	26	55	17	12	AL	Black
373300360	177	160	M8	26	57	17	12	AL	Black
373300370	209	192	M8	26	57	17	12	AL	Black
373300380	317	300	M8	26	57	17	12	AL	Black
373300390	417	400	M8	26	57	17	12	AL	Black
373300510	125	112	M6	20	49	13	10	SS	Natural
373300520	141	128	M6	20	51	13	10	SS	Natural